

INTEGRITY PRODUCTS

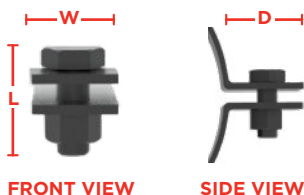
Clamp Cover

Always wear appropriate PPE (personal protective equipment) which conforms to applicable work safe standards.



MEASURE TO ENSURE PROPER FIT

Measure the length, width, and depth of the pipe clamp to determine the correct size of the Clamp Cover required.



TOOLS REQUIRED



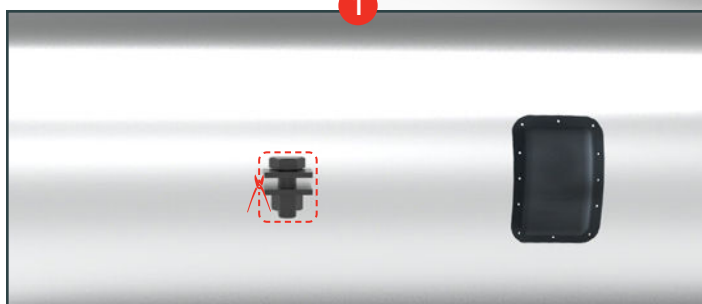
TIN SNIPS



SEALANT

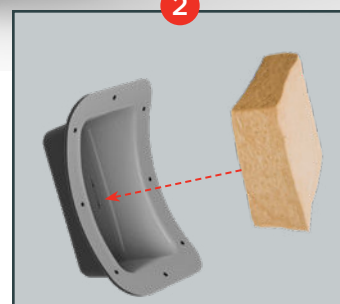


SCREWS

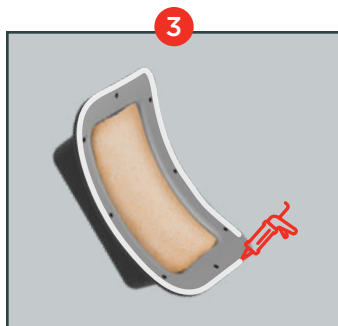


STEP 1
FOR NEW INSTALLATION
Cut out jacketing keeping it as close to the clamp as possible.

NOTE: ensure the jacketing surface is clean from dirt, debris, and moisture.



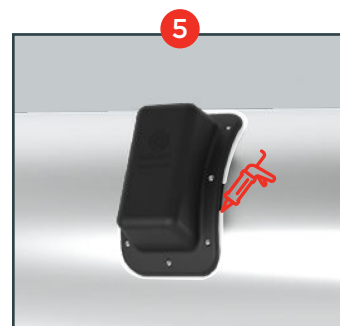
STEP 2
Stuff the Clamp Cover with insulation as required.



STEP 3
Apply sealant at the flanged face and place it over the jacketing around the protrusions.



STEP 4
Fix the Clamp Cover in place and install the screws.



STEP 5
Apply a bead of sealant around the circumference of the Clamp Cover.