

GUIDELINES FOR SPACER

This document is meant to provide the guidelines for installation of stabbed-in type stand-offs (Integrity PPS spacer) between stone wool insulation and the pipe. Integrity PPS spacers are stabbed-in on the inner side of stone wool insulation prior to the installation. In general, all the spacers must be kept equidistant around the circumference of the pipe. To achieve best results, the insulation must be rigid enough to avoid its sag and contact with the pipe from the abovesaid equidistant circumferential spacing as well as longitudinal (see Figure 1). Please refer below table and appendix for the details on the arrangement of spacers on various pipe sizes

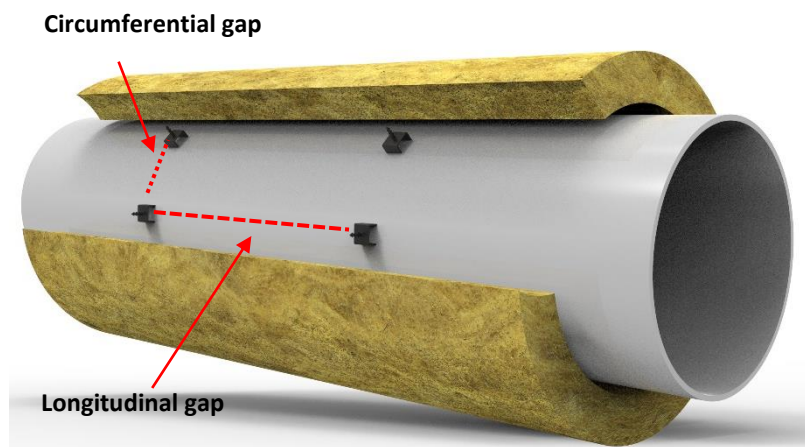


Figure – 1: Typical spacer arrangement showing Longitudinal and circumferential gaps

TABLE – RECOMMENDED SPACERS W.R.T PIPE SIZES

NOMINAL PIPE SIZE (INCH)	CIRCUMFERENTIAL SPACING AMONG ADJACENT SPACERS (INCH.)	RECOMMENDED NO. OF SPACERS
1	1.38	3
2	1.87	4
3	2.75	4
4	2.8	5
6	3.47	6
8	3.4	8
10	4.2	8
12	5	8
14	4.9	9
16	5.0	10
18	6	10
20	6.3	10
24	6.3	12

Note: The spacing is calculated considering the OD of a standard pipe size. Regardless of pipe's thickness (Sch. 40 or Sch. 80) the number of spacers to be kept same through minor variation of circumferential gap among the spacers.

APPENDIX

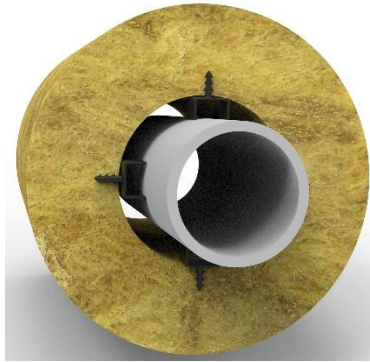


Figure A1 - Spacer arrangement on 3 inches. pipe



Figure A2 - Spacer arrangement on 12 inches. pipe



Figure A3 - Spacer arrangement on 24 inches. pipe