



PRODUCT SPECIFICATIONS

# TubeTrace<sup>®</sup> and ThermoTube<sup>®</sup>

## ACCESSORIES

### TERMINATION AND SEAL KITS

#### Self-vulcanizing Seal Kit

Designed to make a waterproof seal over the end of TubeTrace or ThermoTube. No heat guns or special tools are needed for installation. Product is rated -40°F (-40°C) to 400°F (204°C).

Kit components include:

- Self-vulcanizing silicone rubber tape
- RTV sealant

Each kit contains sufficient materials for approximately six (6) terminations. (Based upon 1.5" O.D. bundle.)



FAK-7

Note: Heat trace end terminations and electrical junction box assemblies must be purchased separately.

#### Heat Shrink Seal Kits

Designed to provide a watertight seal over the end of TubeTrace or ThermoTube

Description	# Legs	Base I.D. inch (mm)		Legs I.D. inch (mm)		Bundle Max. O.D. in. (mm)	Product Maximum Exposure Temp. °F (°C)
		Before Shrinkage	After Shrinkage	Before Shrinkage	After Shrinkage		
FAK-10-A	1	2.00 (50.8)	0.375 (9.53)	2.00 (50.8)	0.375 (9.53)	1.95 (49.53)	257 (125)
FAK-10-B	2	2.00 (50.8)	1.40 (35.56)	0.75 (19.05)	0.350 (8.89)	1.95 (49.53)	257 (125)
FAK-10-C	3	2.40 (60.96)	1.40 (35.56)	1.13 (28.7)	0.500 (12.7)	2.35 (59.69)	257 (125)
FAK-10-A-400	1	2.00 (50.8)	0.375 (9.53)	2.00 (50.8)	0.375 (9.53)	1.95 (49.53)	400 (204)



FAK-10

### SPLICE KITS

#### In-Line Splice Kit

Designed to make a weatherproof seal over TubeTrace or ThermoTube splices.

**FAK-4** (fits 1-1/8" to 2-1/2" O.D. bundles)  
**FAK-4L** (fits 1-7/8" to 3-1/2" O.D. bundles)

Kit components include:

- UV resistant ABS shell
- Glass fiber insulation tape
- Aluminum heat barrier tape
- Stainless steel fasteners
- RTV sealant



FAK-4

Note: Heat trace splice kits and tube fittings must be purchased separately.

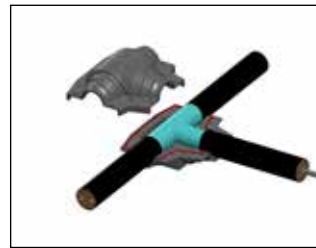
#### Tee Splice Kit

Designed to make a weatherproof seal over TubeTrace or ThermoTube splices.

**FAK-5** (fits 1-1/8" to 2-1/2" O.D. bundles)  
**FAK-5L** (fits 1-7/8" to 3-1/2" O.D. bundles)

Kit components include:

- UV resistant ABS shell
- Glass fiber insulation tape
- Aluminum heat barrier tape
- Stainless steel bolts and nuts
- RTV sealant



FAK-5

Note: Heater cable splice kits and tube fittings must be purchased separately.

#### 90° Elbow Seal Kit

Designed to make a weatherproof seal over TubeTrace or ThermoTube elbow.

**FAK-2** (fits 1-1/8" to 2-1/2" O.D. bundles)  
**FAK-2L** (fits 1-7/8" to 3-1/2" O.D. bundles)

Kit components include:

- UV resistant ABS shell
- Glass fiber insulation tape
- Aluminum heat barrier tape
- Stainless steel bolts and nuts
- RTV sealant



FAK-2

Note: Tube fittings must be purchased separately.

**THERMON The Heat Tracing Specialists<sup>®</sup>**

ISO 9001 REGISTERED

Corporate Headquarters: 100 Thermon Dr • PO Box 609 San Marcos, • TX 78667-0609 • Phone: 512-396-5801 • 1-800-820-4328  
 For the Thermon office nearest you visit us at . . . [www.thermon.com](http://www.thermon.com)

Form CLX0020-0215 • © Thermon Manufacturing Co. • Printed in U.S.A. • Information subject to change.



PRODUCT SPECIFICATIONS

# TubeTrace® and ThermoTube® ACCESSORIES

## REPAIR/PATCH KITS

### Repair/Patch Kit

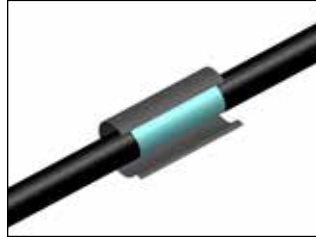
Designed to make a weatherproof seal over splices or outer cover repairs of TubeTrace or ThermoTube bundles.

**FAK-8** (8" X 8" patch)

**FAK-8L** (8" X 96" patch)

Kit components include:

- Self-sealing thermoplastic glass fiber insulation
- Heat reflective tape
- Does not include tube fittings



Note: Heat trace splice kits and tube fittings must be purchased separately.



**FAK-8**

## CONTROL SENSOR KITS

### Temperature Sensor/Thermostat Sensor Kit

Designed to make a weatherproof seal where it is necessary to install an RTD, thermocouple temperature sensor or a thermostat sensing bulb.

#### FAK-4S Sensor Installation Kit

(fits 1-1/8" to 2-1/2" O.D. bundles)

#### FAK-4LS Sensor Installation Kit

(fits 1-7/8" to 3-1/2" O.D. bundles)

#### FAK-4T Sensor Installation Kit

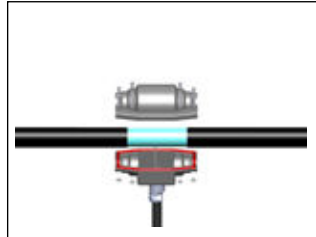
(fits 1-1/8" to 2-1/2" O.D. bundles)

#### FAK-4LT Sensor Installation Kit

(fits 1-7/8" to 3-1/2" O.D. bundles)

Kit components include:

- UV resistant ABS shell
- Glass fiber insulation
- Aluminum barrier tape
- Stainless steel bolts and nuts
- Fitting designed to grip and seal around the thermostat capillary armor (FAK-4T and FAK-4LT only)
- Conduit connection fitting (3/4" NPT)
- RTV sealant



Note: Thermostat and sensors must be purchased separately.



**FAK-4T**

## ENCLOSURE/SHELTER BULKHEAD ENTRY KITS

### FAK-1 Surface Mounted Entry Kit

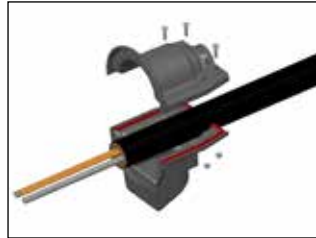
Designed to provide an effective transition when TubeTrace or ThermoTube must pass through a wall.

#### FAK-1

(fits 1-1/8" to 2-1/2" O.D. bundles)

Kit components include:

- UV resistant ABS shell
- Glass fiber insulation tape
- Aluminum heat barrier tape
- Stainless steel bolts and nuts
- RTV sealant



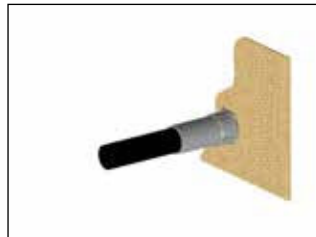
**FAK-1**

### Bulkhead Entry Heat Shrink Seal

Provides an effective transition and strain-relief when TubeTrace or ThermoTube passes through a wall 1" thick or less.

Kit components include:

- Heat-shrinkable bulkhead entry
- Factory applied sealant
- "O"-ring gasket



**FAK-9**

Catalog No.	"A" Overall Nom. Length in. (mm)	"B" TubeTrace Max. O.D. in. (mm)	"B" Drill Size in. (mm)	"C" I.D. After Shrinkage in. (mm)
<b>FAK-9S</b>	4.00 (101.6)	1.60 (40.6)	2 (51.0)	0.75 (19.0)
<b>FAK-9</b>	4.75 (120.7)	2.10 (53.3)	2.4 (60.0)	0.75 (19.0)
<b>FAK-9L</b>	7.00 (177.8)	2.90 (73.4)	3.5 (89.0)	1.43 (36.3)
<b>FAK-9LX</b>	11.50 (292.1)	3.75 (95.0)	4.5 (115.0)	1.50 (38.1)

## FASTENING AND CLAMPING

### LCF Clamps

Designed to provide support for ThermoTube or TubeTrace installations.

**LCF 1-1/4"** (for bundles up to 1-3/8" O.D.)

**LCF 1-5/8"** (for bundles up to 1-3/4" O.D.)



**LCF**