



PRODUCT SPECIFICATIONS

# SafeTrace® ISOLATED STEAM TRACING ThermoTube® PRE-INSULATED TUBING ACCESSORIES

## TERMINATION AND SEAL KITS

### Self-vulcanizing Seal Kit

is designed to make a waterproof seal over the end of SafeTrace or ThermoTube. No heat guns or special tools are needed for installation. Product is rated from -40°F (-40°C) to 400°F (204°C).

#### Kit components include:

- Self-vulcanizing silicone rubber tape
- RTV sealant

Each kit contains sufficient materials for approximately six (6) terminations.



FAK-7 End Seal Kit



**Note . . .** Electrical heat trace end-terminations and junction box assemblies (if included for TubeTrace SE/ME type heated tube bundles ) must be purchased separately.

## SPLICE KITS (Standard kits not intended for -HT and -HTX high temperature bundles\*)

### In-Line Splice Kit

is designed to make a weatherproof seal over SafeTrace or ThermoTube splices.

#### FAK-4

(fits 1-1/8" to 2-1/2" O.D. bundles)

#### FAK-4L

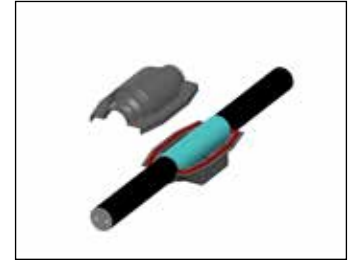
(fits 1-7/8" to 3-1/2" O.D. bundles)

#### Kit components include:

- UV resistant ABS shell
- Glass fiber insulation tape
- Aluminum heat barrier tape
- Stainless steel fasteners
- RTV sealant



FAK-4 In-line Splice Kit



**Note . . .** Heat trace splice kits and tube fittings must be purchased separately if required.

### Tee Splice Kit

is designed to make a waterproof seal over SafeTrace or ThermoTube splices.

#### FAK-5

(fits 1-1/8" to 2-1/2" O.D. bundles)

#### FAK-5L

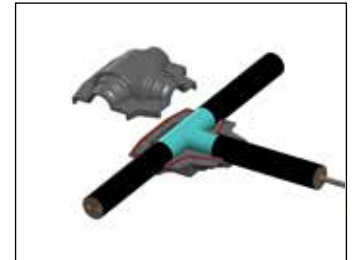
(fits 1-7/8" to 3-1/2" O.D. bundles)

#### Kit components include:

- UV resistant ABS shell
- Glass fiber insulation tape
- Aluminum heat barrier tape
- Stainless steel bolts and nuts
- RTV sealant



FAK-5 Tee Splice Kit



**Note . . .** Heater cable splice kits and tube fittings must be purchased separately.

### 90° Elbow Transition Kit

is designed to make a waterproof seal over SafeTrace or ThermoTube splices.

#### FAK-2

(fits 1-1/8" to 2-1/2" O.D. bundles)

#### FAK-2L

(fits 1-7/8" to 3-1/2" O.D. bundles)

#### Kit components include:

- UV resistant ABS shell
- Glass fiber insulation tape
- Aluminum heat barrier tape
- Stainless steel bolts and nuts
- RTV sealant



FAK-2 "El" Splice Kit



**Note . . .** Tube fittings must be purchased separately.

\* FAK-2L-HT

FAK-4L-HT

FAK-5L-HT

(for HT, HTX, and HTX-2 High Temperature Bundles)



# SafeTrace® ISOLATED STEAM TRACING ThermoTube® PRE-INSULATED TUBING ACCESSORIES

## REPAIR/PATCH KITS

**Repair/Patch Kit** . . . is designed to make a waterproof seal over splices or outer cover repairs of SafeTrace or ThermoTube bundles.

**FAK-8** (8" X 8" patch)

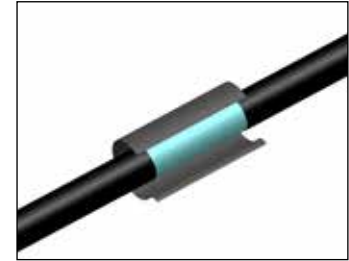
**FAK-8L** (8" X 96" patch)

**Kit components include:**

- Self-sealing rubber/ fiber glass reinforced thermoplastic
- Glass fiber insulation
- Heat reflective tape
- Does not include tube fittings, if required



FAK-8



**Note** . . . Heat trace splice kits and tube fittings, if required, must be purchased separately.

## ENCLOSURE/SHELTER ENTRY KITS

**FAK-1 "Split Entry" Surface Mounted Entry Kit**

is designed to provide an effective transition when SafeTrace or ThermoTube must pass through an enclosure or shelter wall.

**FAK-1**

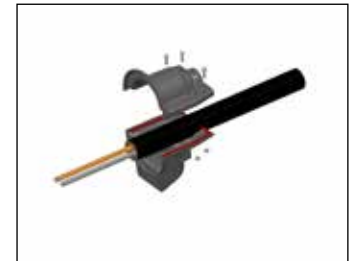
(fits 1-1/8" to 2-1/2" O.D. bundles)

**Kit components include:**

- UV resistant ABS shell
- Glass fiber insulation tape
- Aluminum foil tape
- Stainless steel bolts and nuts
- RTV sealant



FAK-1



**FAK-9 Bulkhead Entry Heat Shrink Seal** provides an effective transition and strain-relief when SafeTrace or ThermoTube passes through a wall 1" thick or less.

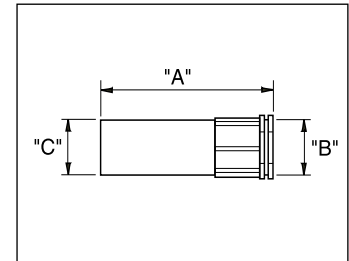
**Kit components include:**

- Heat-shrinkable bulkhead entry
- Factory applied sealant
- "O"-ring gasket

Catalog Number	"A" Overall Nom. Length in. (mm)	"B" Bundle Max. O.D. in. (mm)	"B" Drill Size in. (mm)	"C" I.D. After Shrinkage in. (mm)
FAK-9S	4.00 (101.6)	1.60 (40.6)	2 (51.0)	0.75 (19.0)
FAK-9	4.75 (120.7)	2.10 (53.3)	2.4 (60.0)	0.75 (19.0)
FAK-9L	7.00 (177.8)	2.90 (73.4)	3.5 (89.0)	1.43 (36.3)
FAK-9LX	11.50 (292.1)	3.75 (95.0)	4.5 (115.0)	1.50 (38.1)



FAK-9



## FASTENING AND CLAMPING

**FT-1H** fixing tapes for attaching SafeTrace to piping every 12" (30 cm) or as required.

Catalog Number	Temperature Maximum	Min. Install Temperature	Dimensions
FT-1H	500°F	-40°F	1/2" x 108'



FT-1H

**LCF Clamps** are designed to provide support for ThermoTube installations.

**LCF 1-1/4"**

(for up to 1-3/8" O.D. bundles)

**LCF 1-5/8"**

(for up to 1-3/4" O.D. bundles)



LCF