

INTEGRITY PRODUCTS

# Fire Plugz

Always wear appropriate PPE (personal protective equipment) which conforms to applicable work safe standards.



## TOOLS REQUIRED



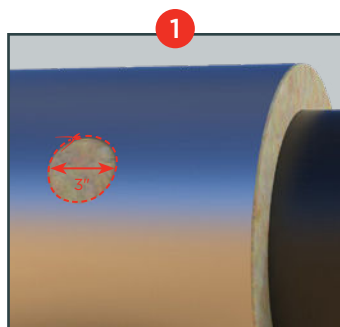
**TIN SNIPS  
/HOLE SAW**



**SEALANT**  
(FS-ONE or equivalent  
recommended)

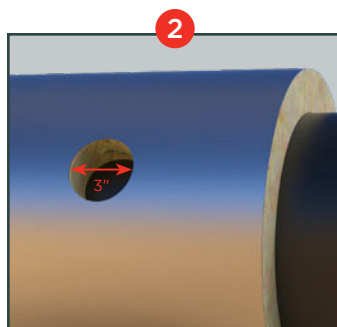


**RIVETS**



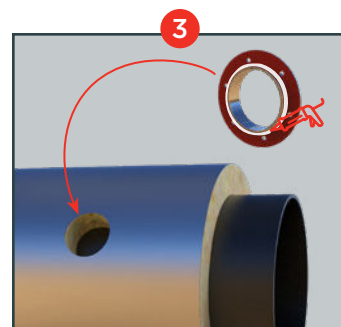
### STEP 1

At the desired location on the metal jacketing mark a 3" circle and cut it out using tinsnips or an appropriate tool.



### STEP 2

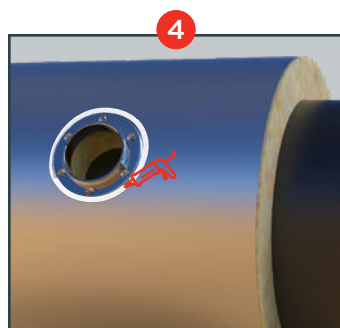
Core out a 3" diameter piece of insulation to the full thickness of the insulation to expose the pipe surface.



### STEP 3

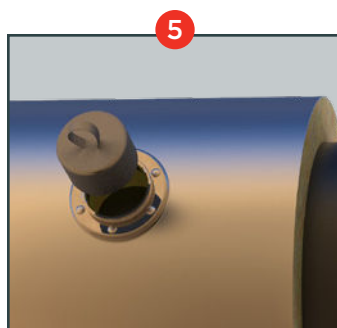
Apply a bead of sealant to the underside of the Fire Plug flange.

**RECOMMENDED:** FS-ONE or equivalent fire-rated sealant.



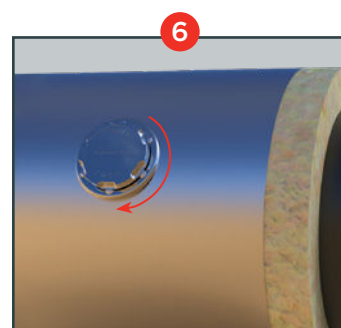
### STEP 4

Place the Fire Plug Flange into position and drill 5mm holes into the metal cladding. Install the Fire Plug using SS rivets provided and secure it into place. Apply a bead of sealant around the circumference of the Fire Plug Flange.



### STEP 5

Insert the specially designed insulation Pillow into the cored-out insulation.



### STEP 6

Screw the metal cover onto the flange until tight and secure.